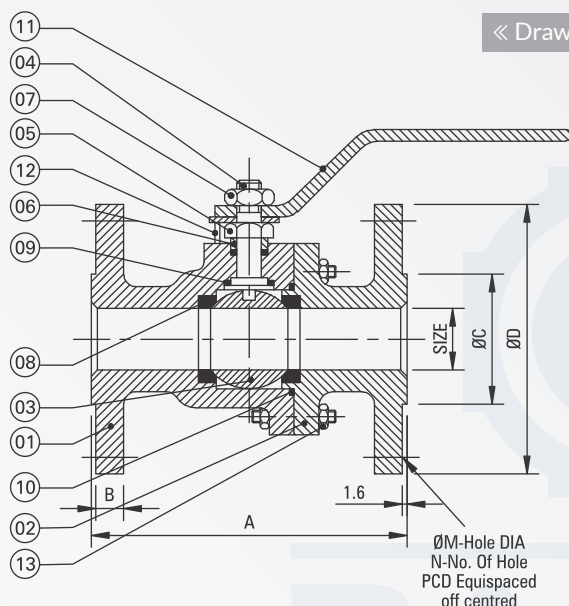
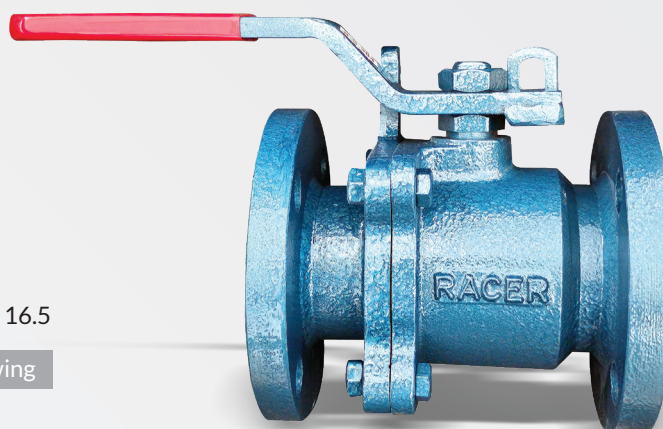


Cast Iron Ball Valves Flange End

(TWO PIECE DESIGN)

Technical Data

Design & Manufacturing Std: BS 5351 / API 6 D
 Testing & inspection Std: API 598 / BS 5146
 Face To Face: As per ANSI B 16.11
 End Connections: Flange as per ANSI B 16.5



« Drawing



PRIMARY SERVICE RATING & TEST PRESSURE

Class	Hydro Test Pressure		Max. Temp.
	Body	Seat	
150	215 PSI	145 PSI	180°C

C. I. BALL VALVE 2PC F/E							
Size Inch M.M.	A	B	ØC	ØD	ØM	N	PCD
	1"	25	127	11.0	51	108	16
1.1/2"	40	165	14.2	73	127	16	4 98.5
2"	50	178	15.7	92	152	19	4 120.6
2.1/2"	65	191	17.5	105	178	19	4 139.7
3"	80	203	19.0	127	190	19	4 152.4
4"	100	229	24.0	157	229	19	8 190.5

S. N.	Parts Name	Material	Qty
01	Body	C.I.	1
02	Body Connector	C.I.	1
03	Ball	SS 202/304/316	1
04	Stem	SS 202/304/316	1
05	Gland Nut	M.S/SS 202/304/316	1
06	Gland Bush	M.S/SS 202/304/316	1
07	Lock Nut	M.S/SS 202/304/316	1
08	Seat Ring	PTFE	2
09	Stem Seal	PTFE	2
10	Body Sealant Ring	PTFE	1
11	Lever	M.S.	1
12	Stopper Pin	M.S.	1
13	Studs & Nuts	M.S.	-

Note: (1) All Dimension are in mm
 (2) Tolerance ± 3 mm
 (3) Also available with locking lever