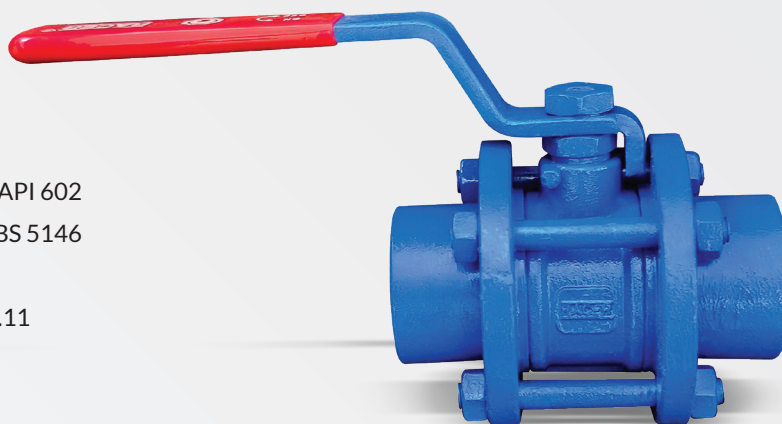


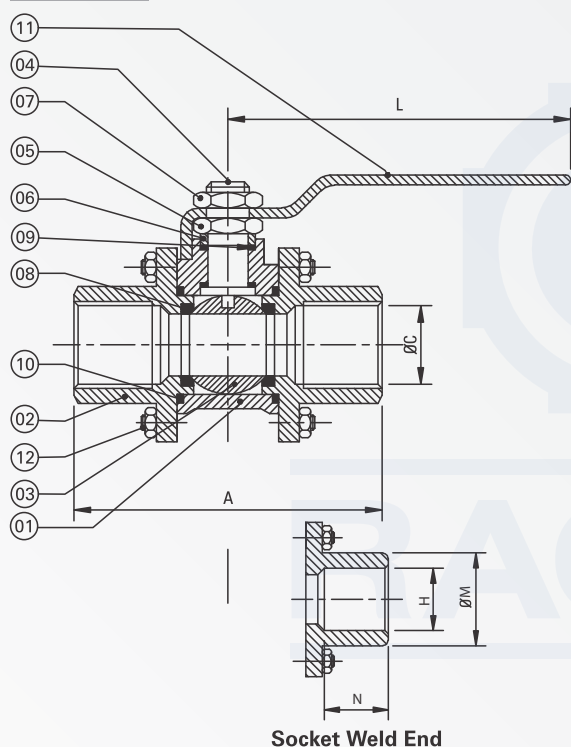
C. S. Ball Valves Screw End (THREE PIECE DESIGN)



Technical Data

Design & Manufacturing Std:	BS 5351 / API 602
Testing & Inspection Std:	API 598 / BS 5146
End Connections: Screw	BSP / NPT
Socket Weld Ends to:	ANSI B 16.11

Drawing »



Socket Weld End

PRIMARY SERVICE RATING & TEST PRESSURE

Class	Hydro Test Pressure		Max. Temp.
	Body	Seat	
150	425 PSI	300 PSI	180°C
Air Test - Seat 80 PSI ± PSI			

BALL VALVE 3PC S/E							
Size		A	ØC	L	Socket Weld End		
Inch	M.M.				H	ØM	N
1/2"	15	90	13	155	22.4	29	12.7
3/4"	20	90	19	160	27.3	35	19.0
1"	25	95	25	160	34.1	43	22.0
1.1/4"	32	110	32	160	43.0	54	22.0
1.1/2"	40	120	38	178	49.0	58	22.0
2"	50	130	50	178	61.3	71	23.0
2.1/2"	65	144	64	190	76.0	105	23.0
3"	80	160	79	190	90.0	108	23.0

S. N.	Parts Name	Material	Qty
01	Body	C.S. (ASTM A 216 Gr. WCB)	1
02	Body Connector	C.S. (ASTM A 216 Gr. WCB)	2
03	Ball	S.S. 202/304/316	1
04	Stem	S.S. 202/304/316	1
05	Gland Nut	M.S./S.S. 202/304/316	1
06	Gland Bush	M.S./S.S. 202/304/316	1
07	Lock Nut	M.S./S.S. 202/304/316	1
08	Seat Ring	PTFE/GFT	2
09	Stem Seal	PTFE/GFT	2
10	Body Sealant Ring	PTFE/GFT	2
11	Lever	M.S.	1
12	Stud & Nuts	M.S.	4

Note: (1) All Dimension are in mm
(2) Tolerance ± 3 mm
(3) Also available in CI on request

Application

